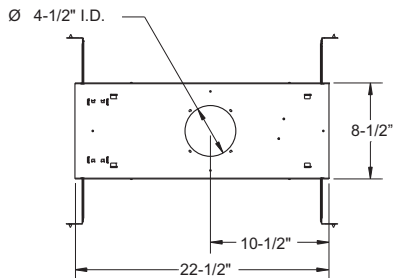
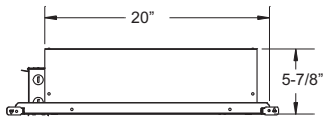
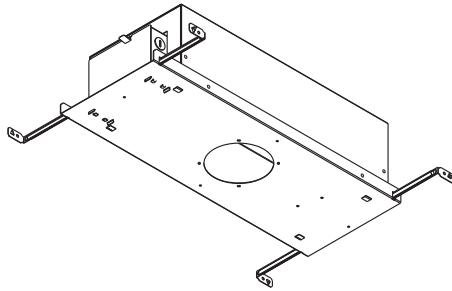




## 2-012-I/C

*MR16 - Shallow I/C Housing*

### SPECIFICATIONS



**Housing:**

- Rated IC. Approved for direct burial in insulation.
- Unique Design allowing installations of very shallow plenums as low as 6".
- Black powder coated 20ga. C.R.S. baseplate
- 16" Hanger bars supplied as standard
- Approved for all ceiling types including air-handling plenums.

**J-box:**

- 18ga galvanized steel
- 5 K.O. around j-box to allow for easy wire entry
- Approved for branch circuit wiring

**Thermal Protection:**

- All housings have overload protection for over lamping.

**Transformer:**

- Housings with Q-TRAN toroidal magnetic transformer housings are rated to MAX 50 Watts. 120V, 277V Primary available.
- Transformer is accessed through ceiling opening.

**Socket:**

- Low Voltage MR-16, 12V, (lamp by others).
- Porcelain Bi-Pin socket type GX5.3

**Guarantee:**

- 5 Year Warranty

### ORDER GUIDE

HOUSING	TRANSFORMER	VOLTAGE	OPTION
2-012-I/C	Q-TRAN - Magnetic XMR	120 277	BPHI - (Black Painted Housing Interior) WPHI - (White Painted Housing Interior)

Note:  
1) Q-Tran Toroidal transformer only available

Trims to be used with 2-012-I/C	
Aqua	Lensed Picolo
Aurora	Picolo
Deep Aurora	Pin Hole
Coral	Pivot
Conus	Siris
Demi	Star Lite
Eclipse	Split
Flare Wall Wash	Sunburst
Key Hole	Slice

See individual specification sheets for trim details

**DaSal Industries Ltd.**  
Unit #804-1515 Broadway Street  
Port Coquitlam, BC V3C 6M2  
Phone (604) 464-5644 Fax (604) 464-0888  
www.dasalindustries.com

Data and specifications subject to change without notice

Type	Project Name
	Order Number

