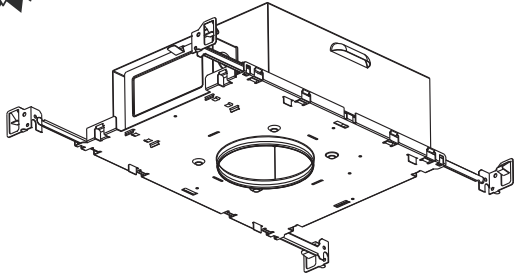




2-060-F-D/A
75W MR16 Non I/C Housing
(For Deep Aurora trims)

SPECIFICATIONS



Housing:

- Rated Non I/C.
- Unique design allowing installations of very shallow plenums as low as 5".
- Black powder coated 20ga. C.R.S. baseplate designed for bi-directional mounting of hanger bars.
- 16" Hanger bars supplied as standard
- Approved for all ceiling types including air-handling plenums.

J-box:

- 18ga galvanized steel
- 5 K.O. around j-box to allow for easy wire entry
- Approved for through wiring applications.

Thermal Protection:

- All housings have overload protection for over lamping.

Transformer:

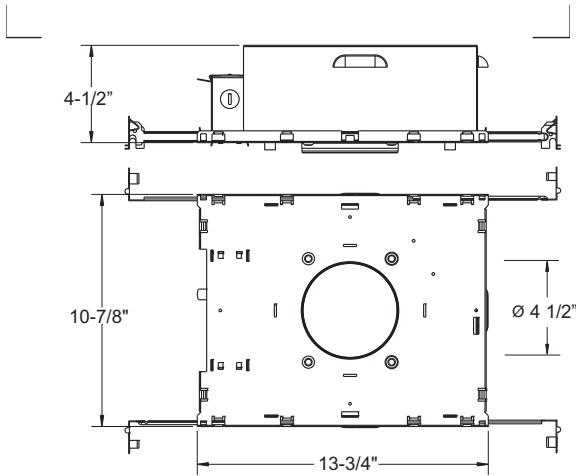
- Housings with Standard magnetic transformers are rated to MAX 75 Watts. Magnetic core and coil transformers are made with copper windings, Class H Rating (180°C): 120V, 277V, 347V Primary available.
- Optional Electronic transformer housings are available, MAX 75 Watts: 120V, 277V, Primary available only.
- Optional Q-TRAN toroidal magnetic transformer housings are available, MAX 75 Watts: 120V, 277V, Primary available only.
- Transformer is accessed through ceiling opening.

Socket:

- Low Voltage MR-16, 12V (lamp by others).
- Porcelain Bi-Pin socket type GX5.3

Guarantee:

- 5 Year Warranty



ORDER GUIDE

HOUSING	TRANSFORMER	VOLTAGE	OPTION
2-060-F-D/A	Blank - Magnetic XMR	120	BPHI - (Black Painted Housing Interior)
	E - Electronic XMR	277	WPHI - (White Painted Housing Interior)
	Q-TRAN - Magnetic XMR	347 ¹	

Note:
 1) Magnetic transformer only available.

Trims to be used with 2-060-F-D/A High Wattage Frame-In Kit

Aqua	Lensed Picolo
Aurora	Picolo
Deep Aurora	Pin Hole
Conus	Pivot
Coral	Siris
Demi	Slice
Eclipse	Star Lite
Flare Wall Wash	Split
Key Hole	Sunburst

See individual specification sheets for trim details

DaSal Industries Ltd.
 Unit #804-1515 Broadway Street
 Port Coquitlam, BC V3C 6M2
 Phone (604) 464-5644 Fax (604) 464-0888
 www.dasalindustries.com

Data and specifications subject to change without notice

Type	Project Name
	Order Number

